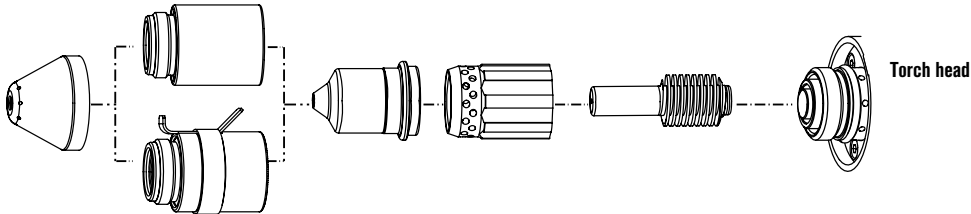


# Hypertherm® powermax45®

## T45m machine torch consumables

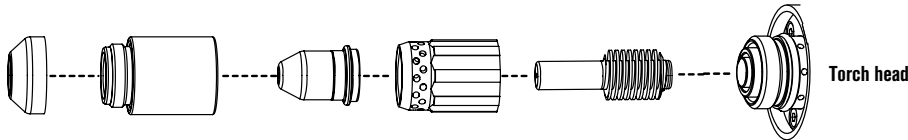


### Shielded consumables



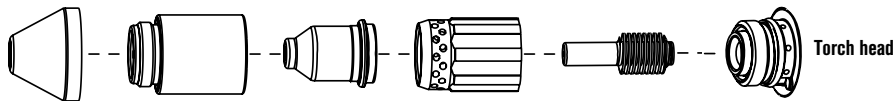
	Shield	Retaining cap	Nozzle	Swirl ring	Electrode
	220673	220713	220671	220670	220669
<b>Ohmic</b>		220719			

### Unshielded consumables



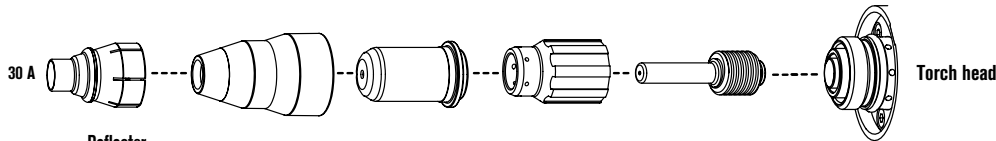
	Deflector	Retaining cap	Nozzle	Swirl ring	Electrode
	220717	220713	220718	220670	220669

### Gouging consumables



	Shield	Retaining cap	Nozzle	Swirl ring	Electrode
	220675	220713	220672	220670	220669

### T30v consumables\*



	Deflector (optional)	Retaining cap	Nozzle	Swirl ring	Electrode
<b>30 A</b>	220569	220483	220480	220479	220478

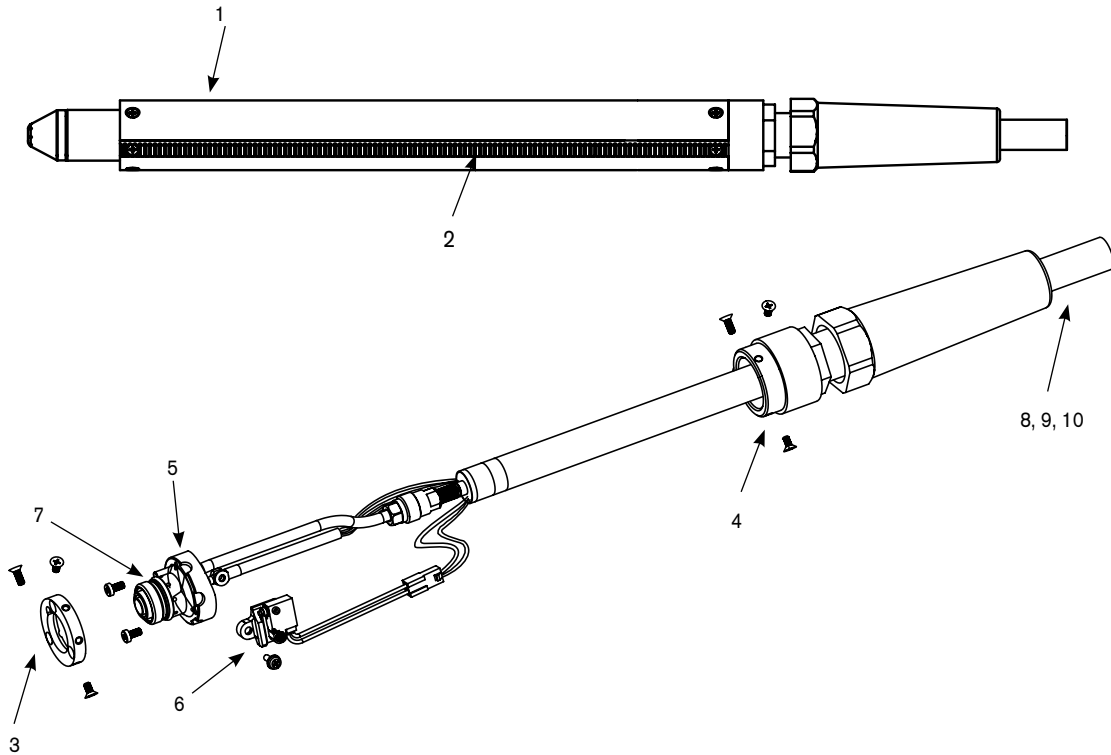


#### TECHNOLOGIES

**Dielectric shield**  
**FastConnect™**  
**Vented shield**  
**Conical Flow™**

\* Use T30v 30 A consumables for 30 A fine-feature cutting on thin metals.

## T45m machine torch assembly



### Assembly

Part number	Description
088010*	T45m machine torch assembly with 25' (7.6 m) leads
088011*	T45m machine torch assembly with 35' (10.7 m) leads
088012*	T45m machine torch assembly with 50' (15.2 m) leads
1. 228228	Kit: T45m positioning sleeve
2. 228229	Kit: T45m removable gear rack
3. 228322	Kit: Front mounting ring
4. 228323	Kit: Rear mounting ring
5. 228320	Kit: T45m torch body replacement
6. 228321	Kit: T45m cap-sensor switch replacement
7. 058503	O-ring: torch body
8. 228317	T45m torch lead replacement, 25' (7.6 m)
9. 228318	T45m torch lead replacement, 35' (10.7 m)
10. 228319	T45m torch lead replacement, 50' (15.2 m)
128650	On/Off pendant for machine torch, 25' (7.6 m)
128651	On/Off pendant for machine torch, 50' (15.2 m)
128652	On/Off pendant for machine torch, 75' (22.9 m)
228300	Work lead with clamp, 20' (6.1 m)
228307	Work lead with clamp, 50' (15.2 m)

\*Assembly includes consumables

